

# Addison Rowe Gallery

---



The Art of the Transcendental Painters

Addison Rowe Gallery *The Art of the Transcendental*

229 E Marcy St. Santa Fe, NM 87501. 505.982.1533. [addisonrowe.com](http://addisonrowe.com) *Painting Group*

The word Transcendental has been chosen as a name for the Group because it best expresses its aim, which is to carry painting beyond the appearance of the physical world, through new concepts of space, color, light and design, to imaginative realms that are idealistic and spiritual. The work does not concern itself with political, economic or other social problems.

(Original Manifesto, Transcendental Painting Group)

Cover: Emil Bisttram. *New Mexico Landscape, Taos.*

Oil on board. 26" x 36". Signed: lower right with monogram

# Ed Garman (1914 - 2004)



No. 382, 1947

Oil on masonite

24" x 24"

Signed and numbered: verso



Addison Rowe Gallery *The Art of the Transcendental  
Painting Group*



No. 243, 1946  
Gouache and watercolor  
on paper  
14" x 18"  
Signed, dated, and  
numbered: verso

... the end result should  
transport the beholder  
to a region  
of feeling that revitalizes  
his or her spiritual nature.

(Ed Garman)

*Invention*, 1945  
Watercolor on paper  
20" x 15"

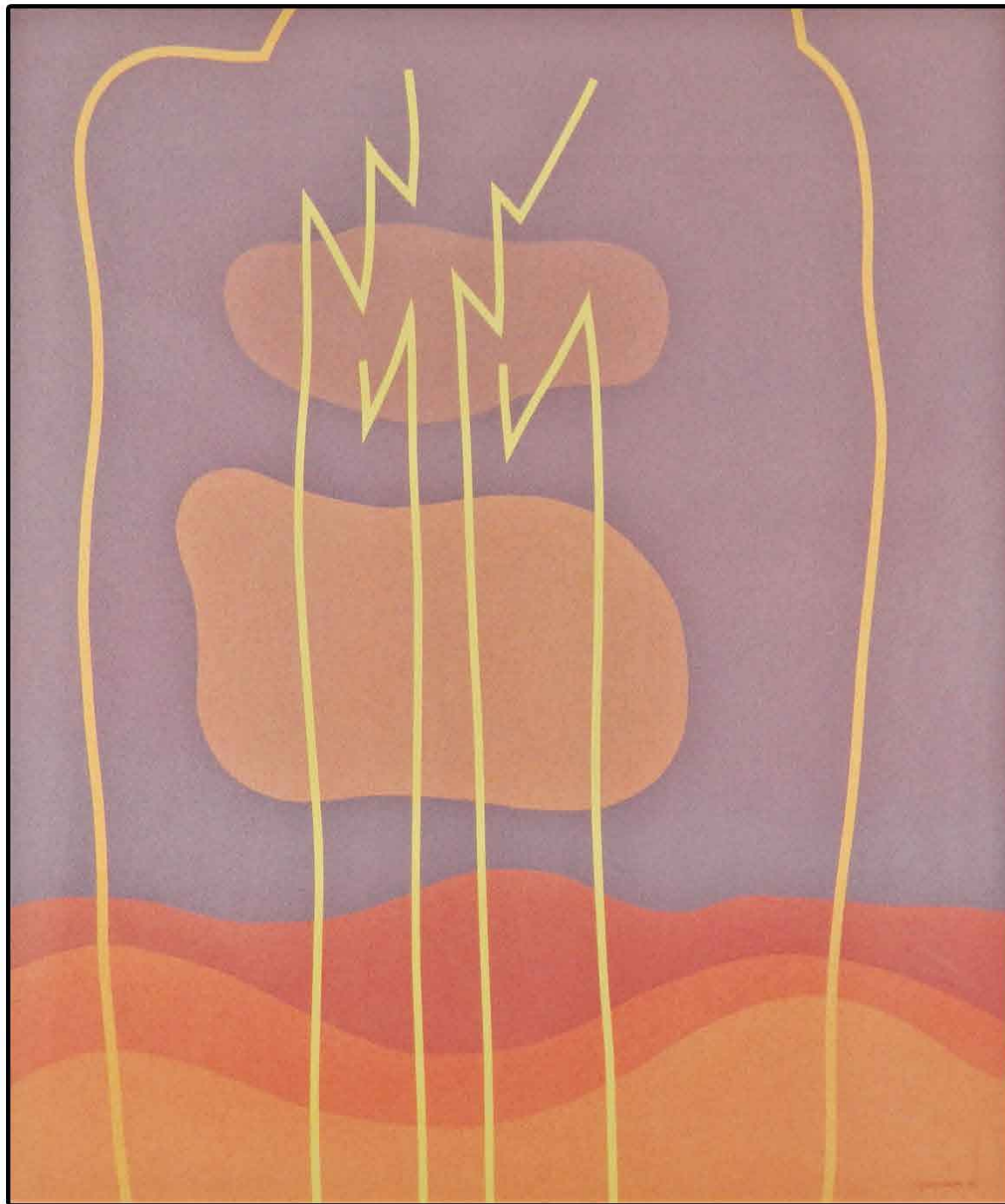
Signed, dated, and numbered: verso



Addison Rowe Gallery *The Art of the Transcendental*

229 E Marcy St. Santa Fe, NM 87501. 505.982.1533. [addisonrowe.com](http://addisonrowe.com) *Painting Group*

Raymond Jonson (1891 - 1982)



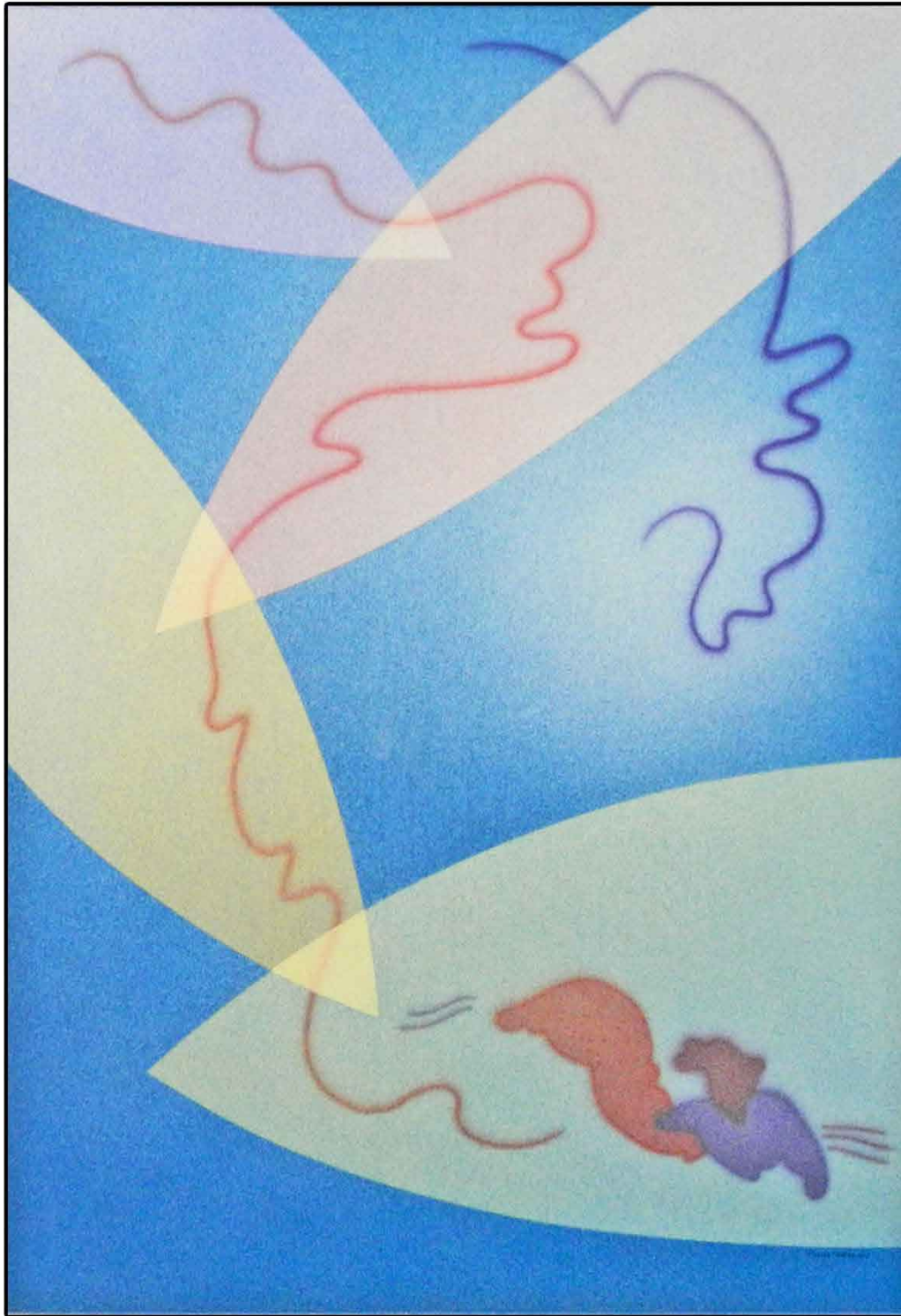
*Watercolor No. 7, 1946*

Watercolor on paper

24" x 20"

Signed: lower right





Calling attention to the quality and the resulting sensation of mystery lying within the painted areas...

aliveness to such an extent that the work possesses life...

That every element contained within the work contributes toward establishing a unity...

A vitality of rightness between and within the areas.

(Raymond Jonson)

*Casein Tempera*

*No.1, 1941.*

Casein Tempera on paper.

27" x 19". Signed and dated: lower right

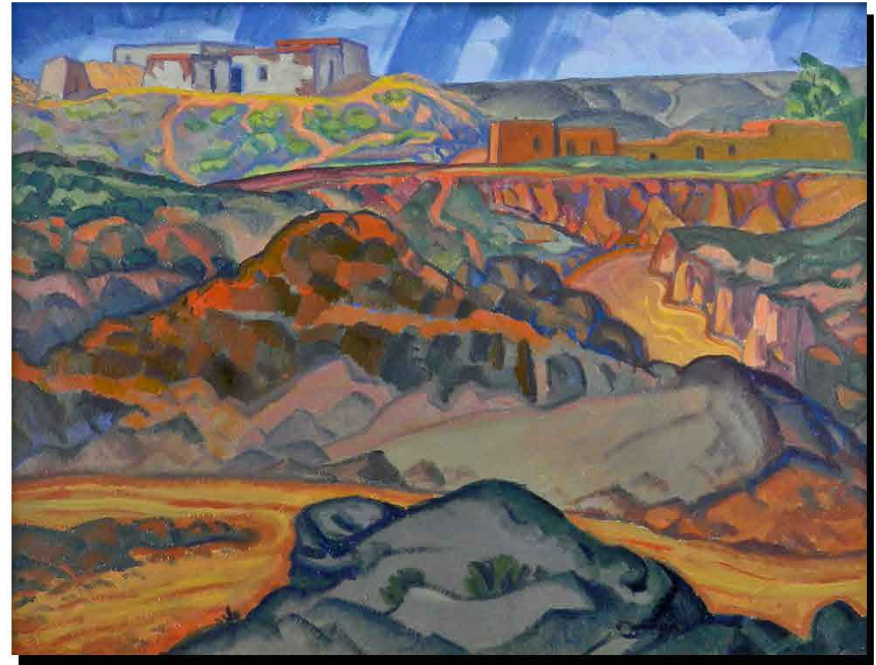
Addison Rowe Gallery *The Art of the Transcendental  
Painting Group*

*Arroyo #4, 1922*

Oil on board

18" x 24"

Signed and dated: lower right



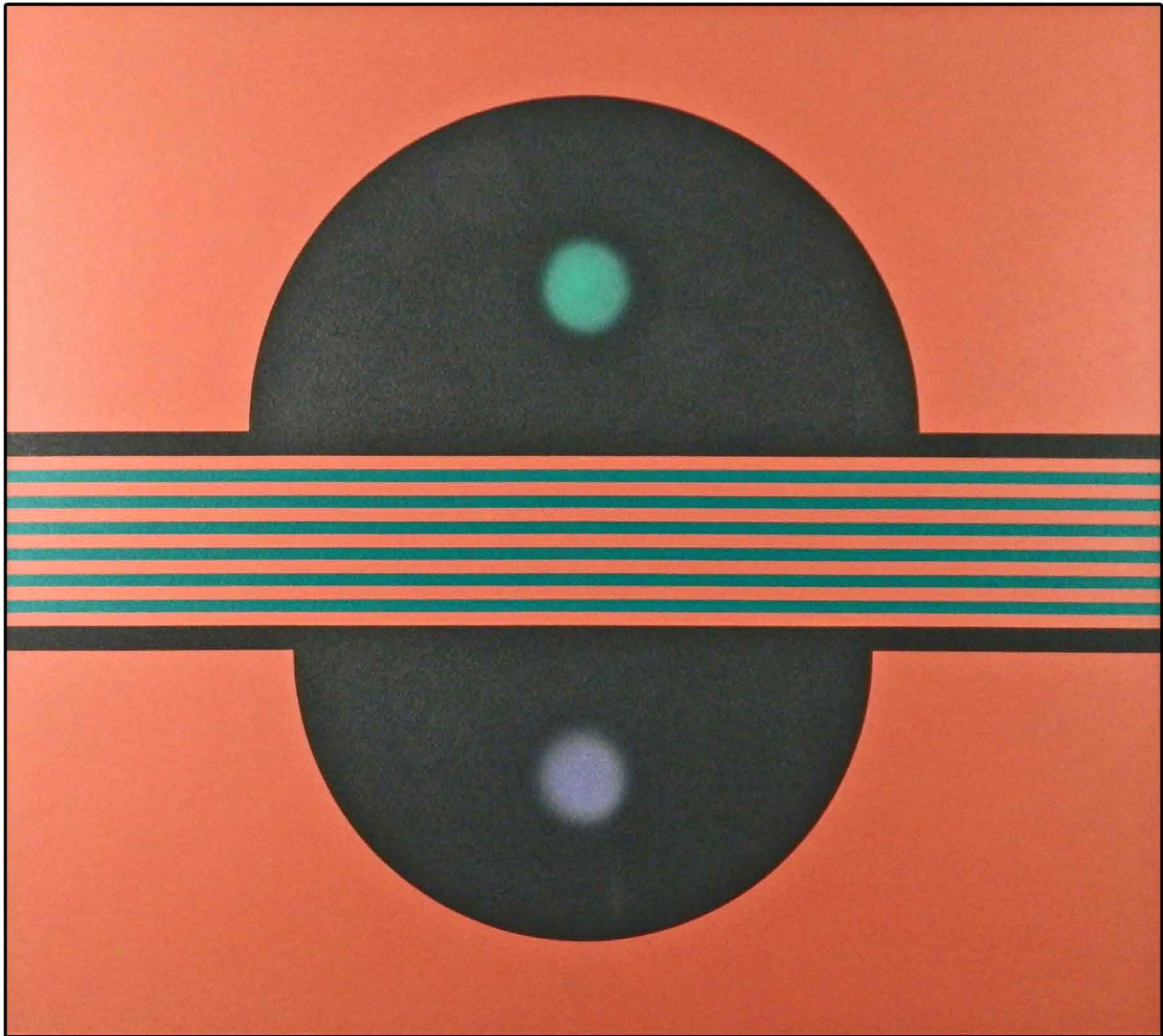
*Chicken Yard, 1922*

Oil on board

17 1/4" x 23 1/4"

Signed and dated: lower right



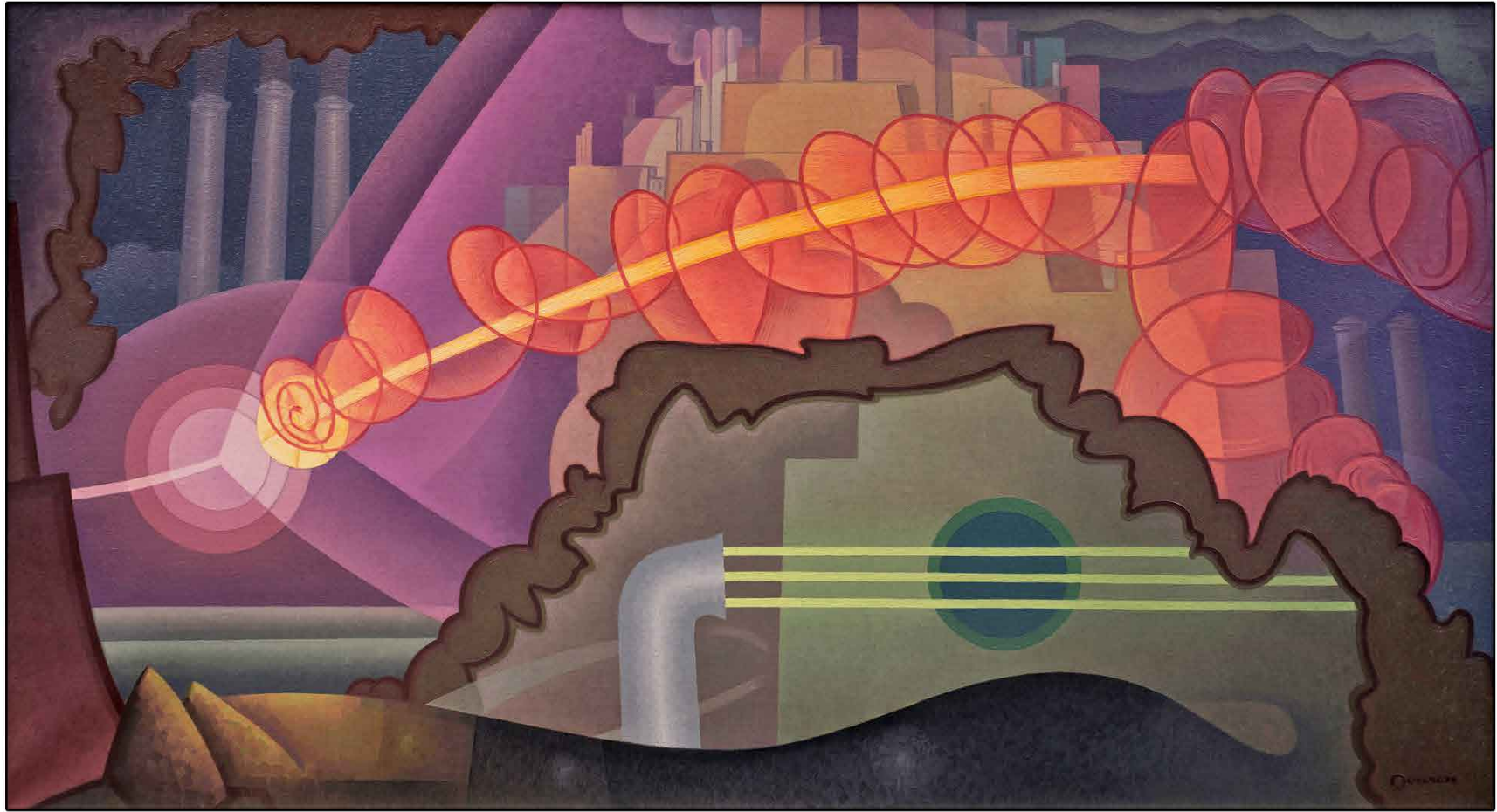


*Polymer #1*, 1967. Polymer on canvas. 42" x 48". Inscribed and signed: verso

Addison Rowe Gallery *The Art of the Transcendental  
Painting Group*

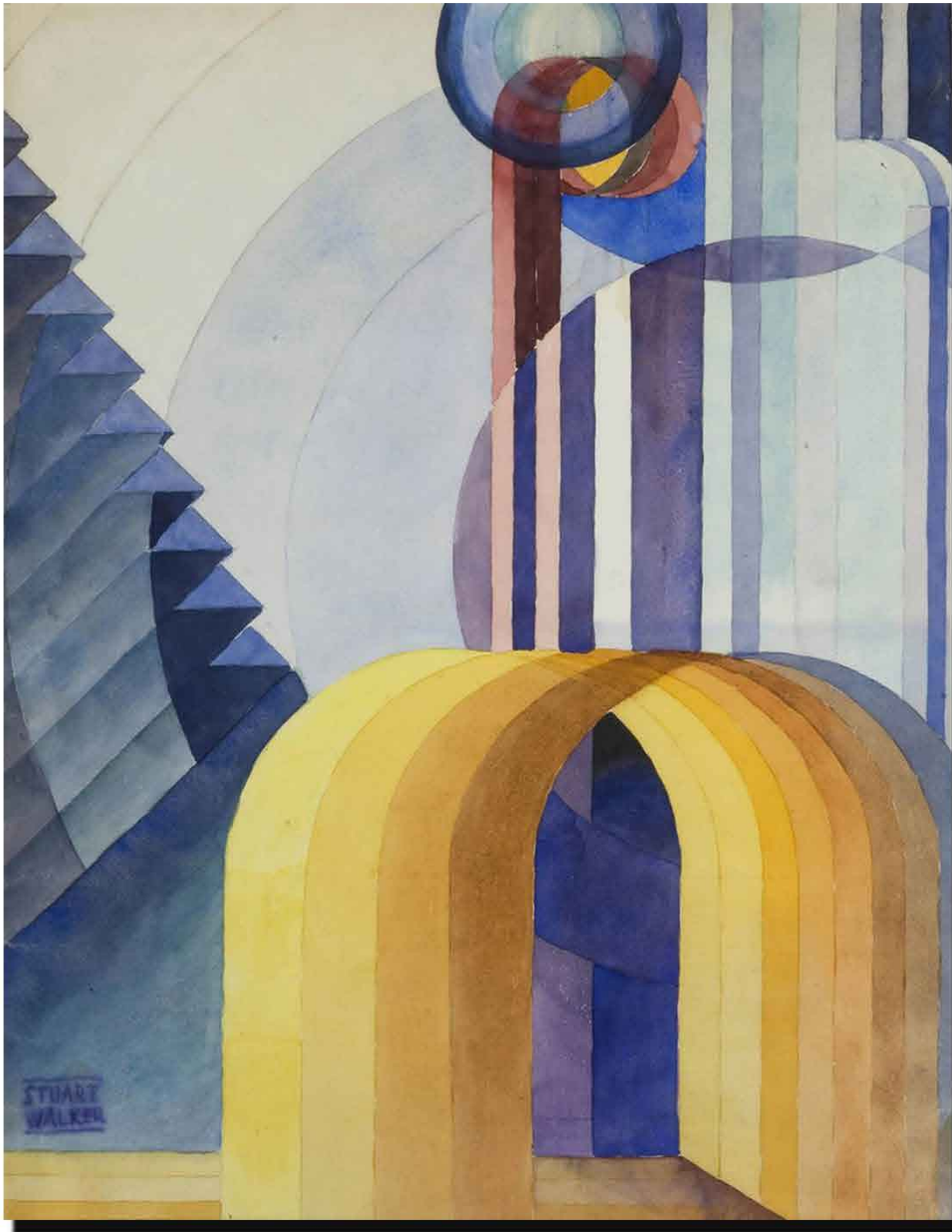
If one can find the key to creation, I mean art creation, there is no material stumbling block as long as faith remains... We never enjoy or appreciate those things we can have without any effort or strong sacrifice. For myself, I would gladly sacrifice all physical for one perfect complete existence of spiritual emotion.

(Raymond Jonson)



*City Forces*, 1932. Oil on canvas. 37" x 68". Signed: lower right





Stuart Walker  
(1904 - 1940)

"E", ca. 1933  
Watercolor on paper  
18" x 14"  
signed: lower left

*Afternoon*, ca. 1933  
watercolor on paper  
18" x 14"  
Signed: center left

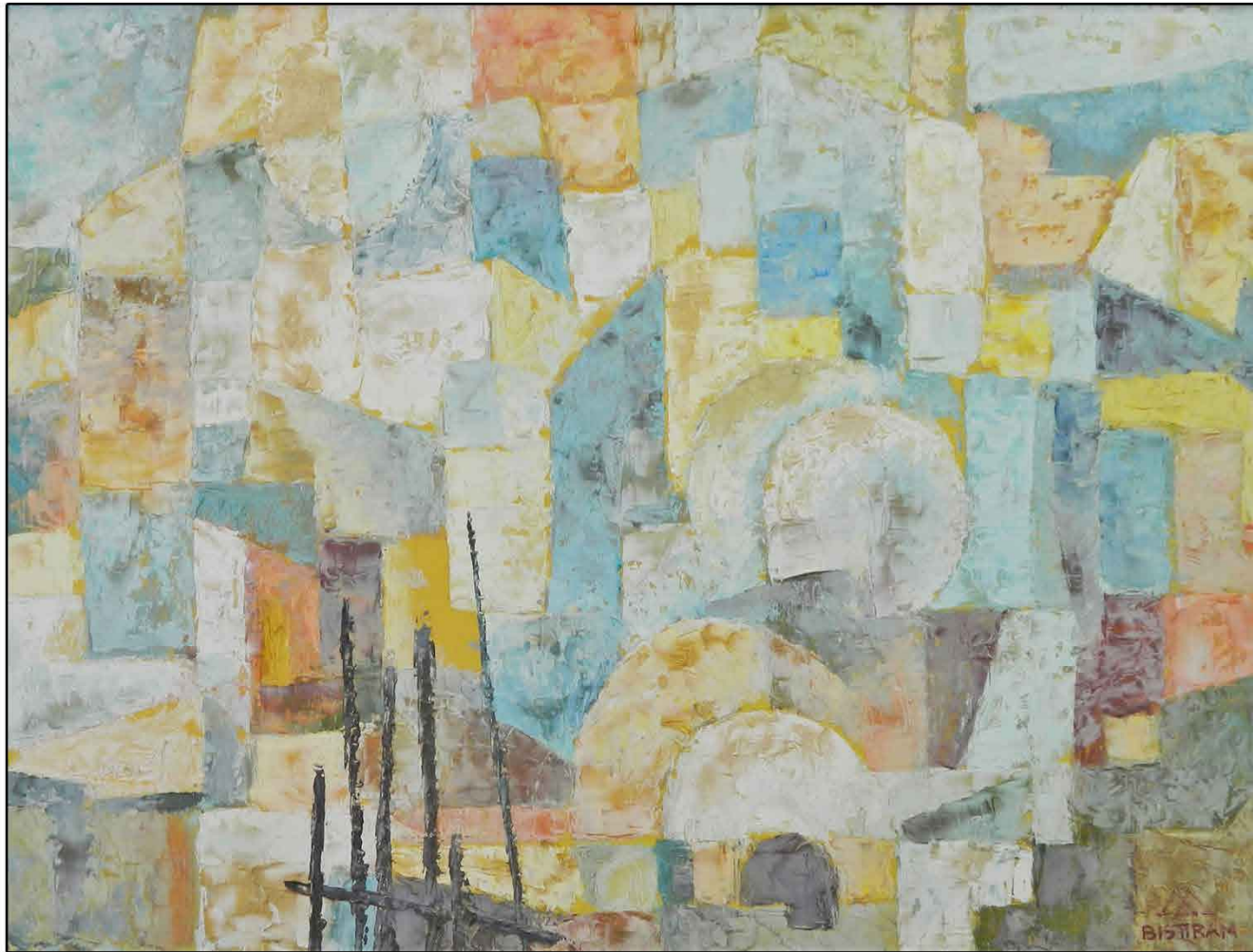




Addison Rowe Gallery *The Art of the Transcendental*

229 E Marcy St. Santa Fe, NM 87501. 505.982.1533. [addisonrowe.com](http://addisonrowe.com) *Painting Group*

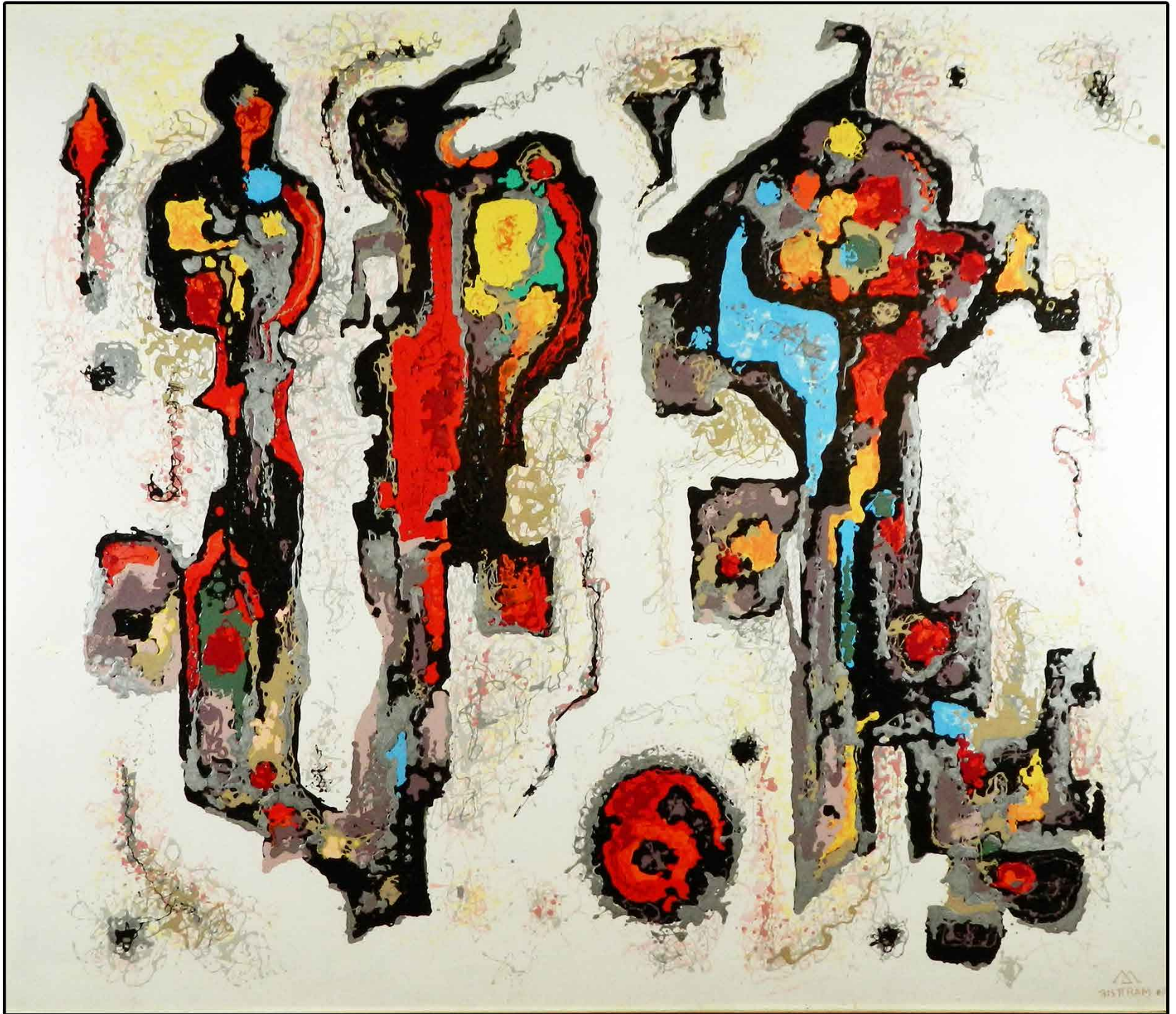
## Emil Bisttram (1895 - 1976)



These pictures  
are conceptions  
of light -  
the essence of fire,  
not as we see  
in the  
material world  
but as the radiance  
of the inner being.  
(Agnes Pelton)

*Abstract Landscape*. Oil on board, 24" x 30 1/2". Signed: lower right





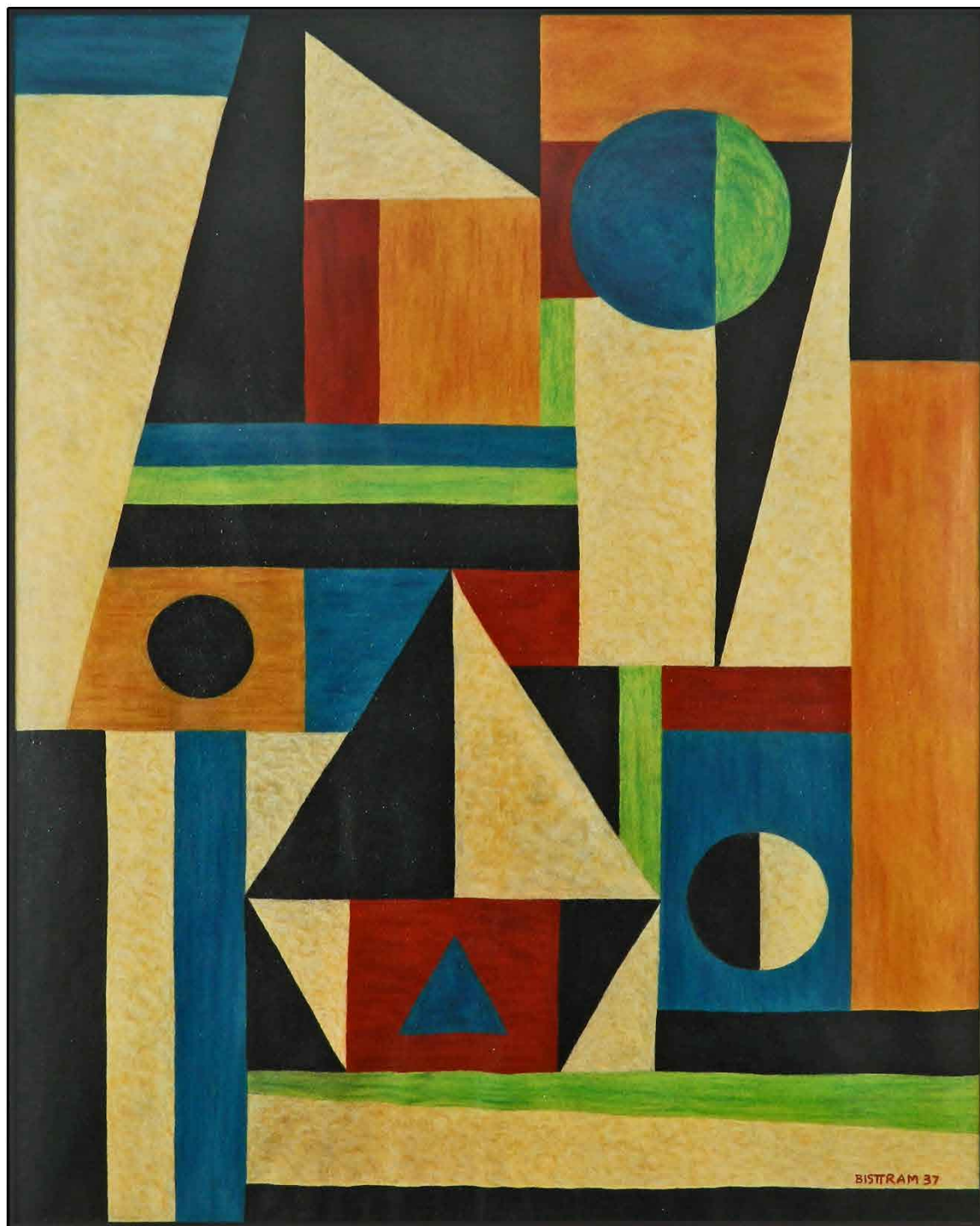
*Indian Ceremonial. Acrylic Laquer on board. 48" x 56". Signed & dated: lower right*



Addison Rowe Gallery *The Art of the Transcendental  
Painting Group*



*Red Rain*, ca. 1930  
Oil on canvas  
24" x 30"  
Signed: lower right



*Transcendental Abstraction, 1937*

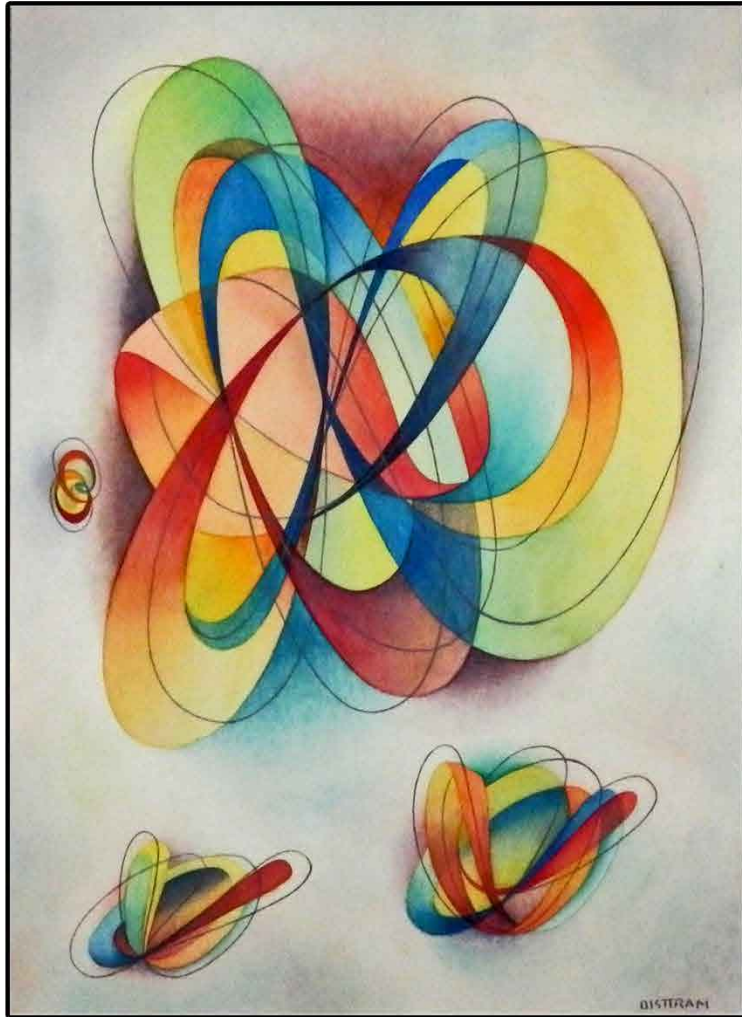
Encaustic on paper

28" x 22"

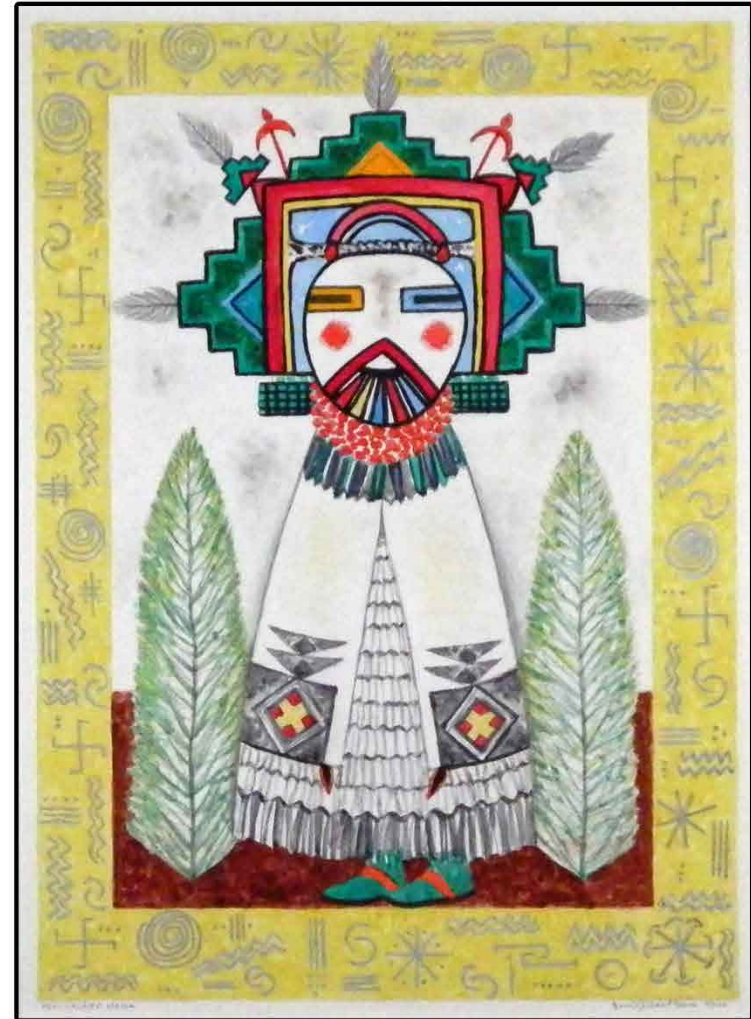
Signed & dated: lower right



Addison Rowe Gallery *The Art of the Transcendental  
Painting Group*



*Musical Rhythms*. Watercolor on paper.  
21" x 15". Signed: lower right



*Hopi Calako Mana*. Watercolor. 22" x 16"  
Signed & located (Taos); lower right

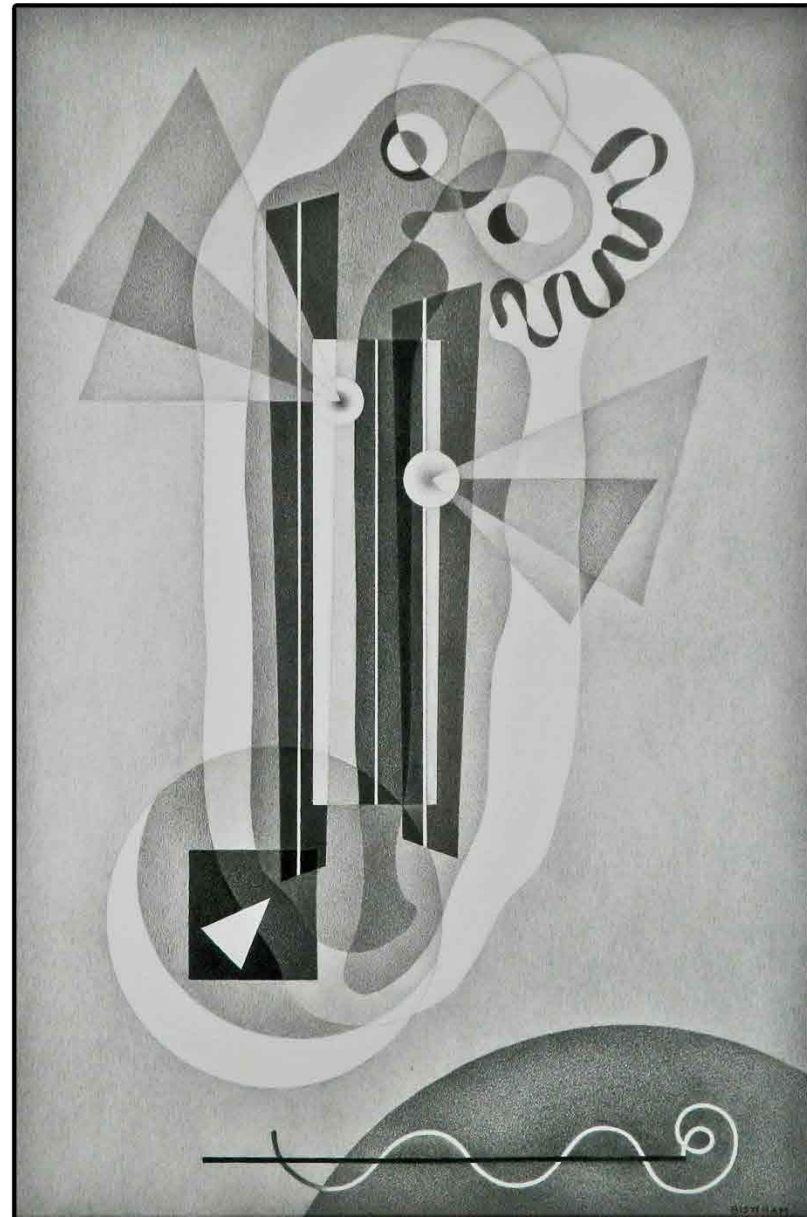


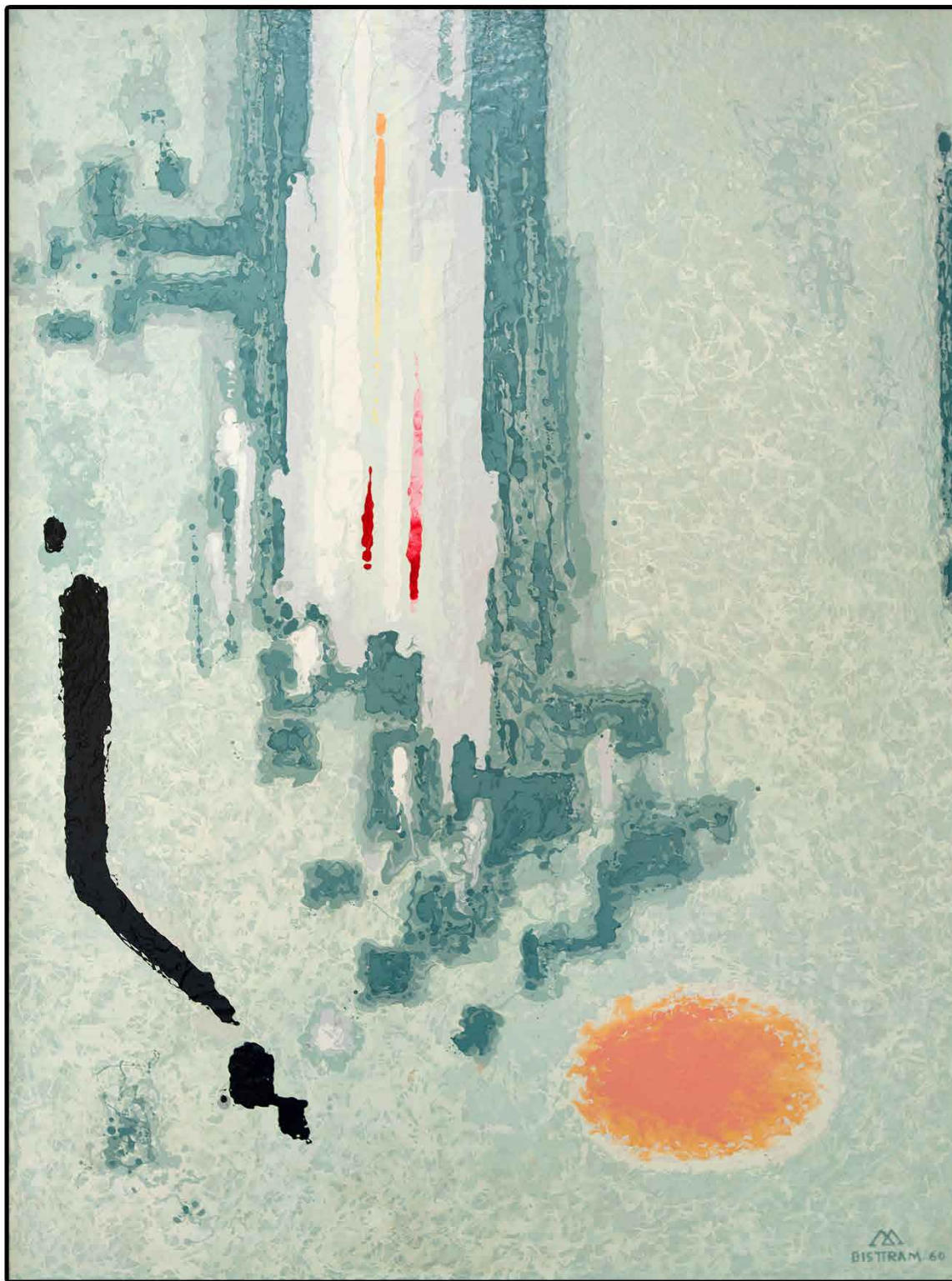
*Embracing Couple. Encaustic on paper. 22" x 22". Signed and dated: lower right*



A transcendental painting  
represented an ideal  
condition, or one of  
expanded  
awareness and acceptance.  
(Tiska Blankenship)

*Affection*, ca. 1940  
Graphite on paper  
21" x 14"  
Signed: lower right





*White Noise*, 1960  
Acrylic laquer on board  
64" x 48"  
Signed & dated:  
lower right



***Taos Moderns:***

Beatrice Mandelman (1912 - 1998)



*Red Feathers*, 1958  
12" x 16"  
Collage on canvas  
Signed: lower right & verso



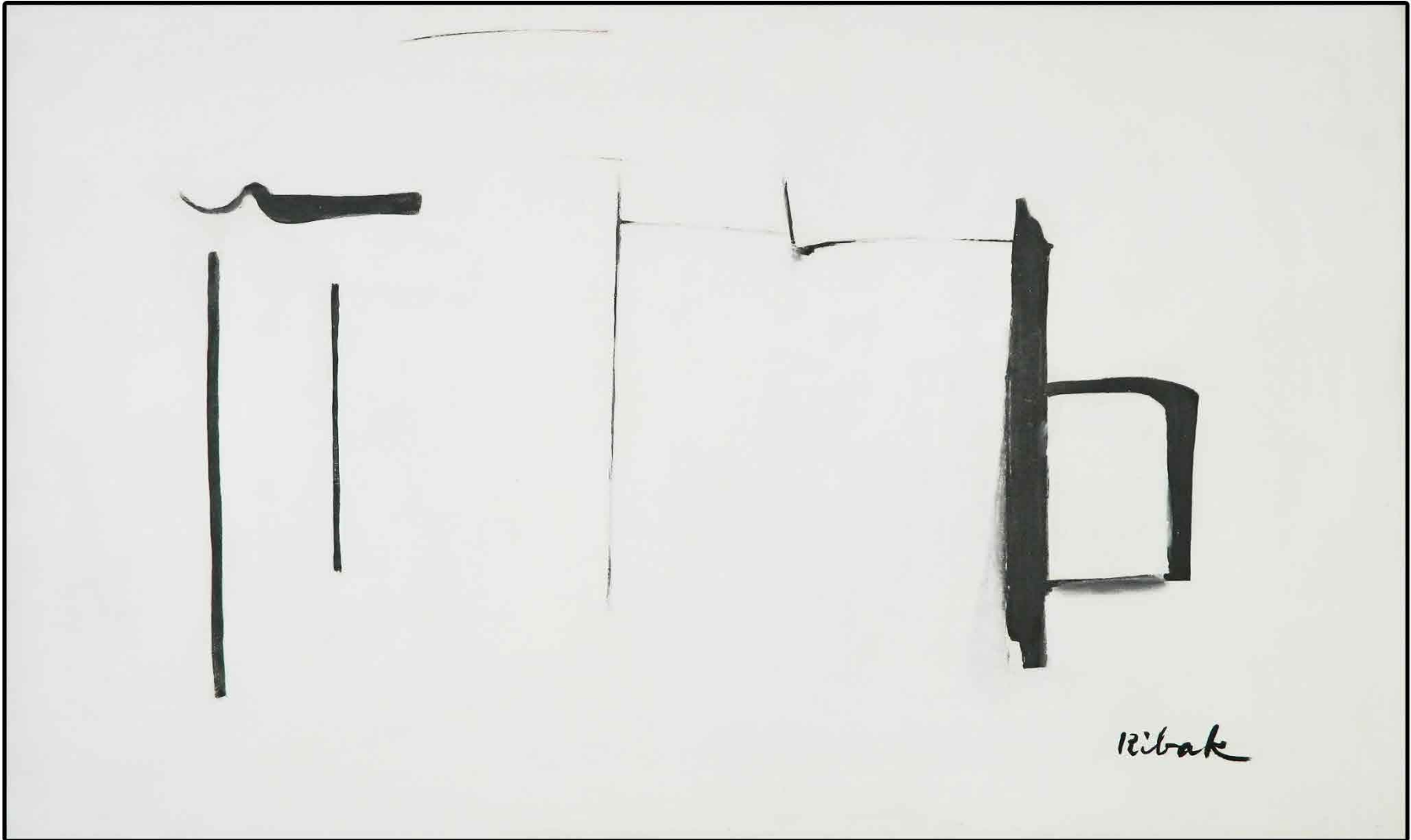
*Winter*, ca. 1955. Casein, enamel, & collage on board. 30" x 40". Signed: lower right



Addison Rowe Gallery *The Art of the Transcendental*

229 E Marcy St. Santa Fe, NM 87501. 505.982.1533. [addisonrowe.com](http://addisonrowe.com) *Painting Group*

## Louis Ribak (1902 - 1979)



*Winter Structure*. Oil on canvas. 23 1/2" x 39 1/2". Signed: lower right



Through the created art icon and the viewer's receptivity, the artist offers a perspective for the betterment of human society.  
(Tiska Blankenship)

*Blue Sky*  
Oil on canvas  
57" x 41"  
Signed: upper right



Addison Rowe Gallery *The Art of the Transcendental  
Painting Group*



*Canyon series #17. Acrylic on canvas. 23 3/4" x 35 1/2". Signed lower right*

*Grey, White, & Yellow*  
Geometric, ca. 1960  
Acrylic on canvas  
40" x 31"  
Signed: lower right

