

An abstract painting in shades of gray and black. It features a large, dark, circular shape on the right side, and various textured, brushstreaked areas in lighter grays and whites. The overall composition is layered and complex.

Addison Rowe Gallery

Emil Bisttram Day 2015

Exhibition Catalog:
Late Additions

Addison Rowe Gallery

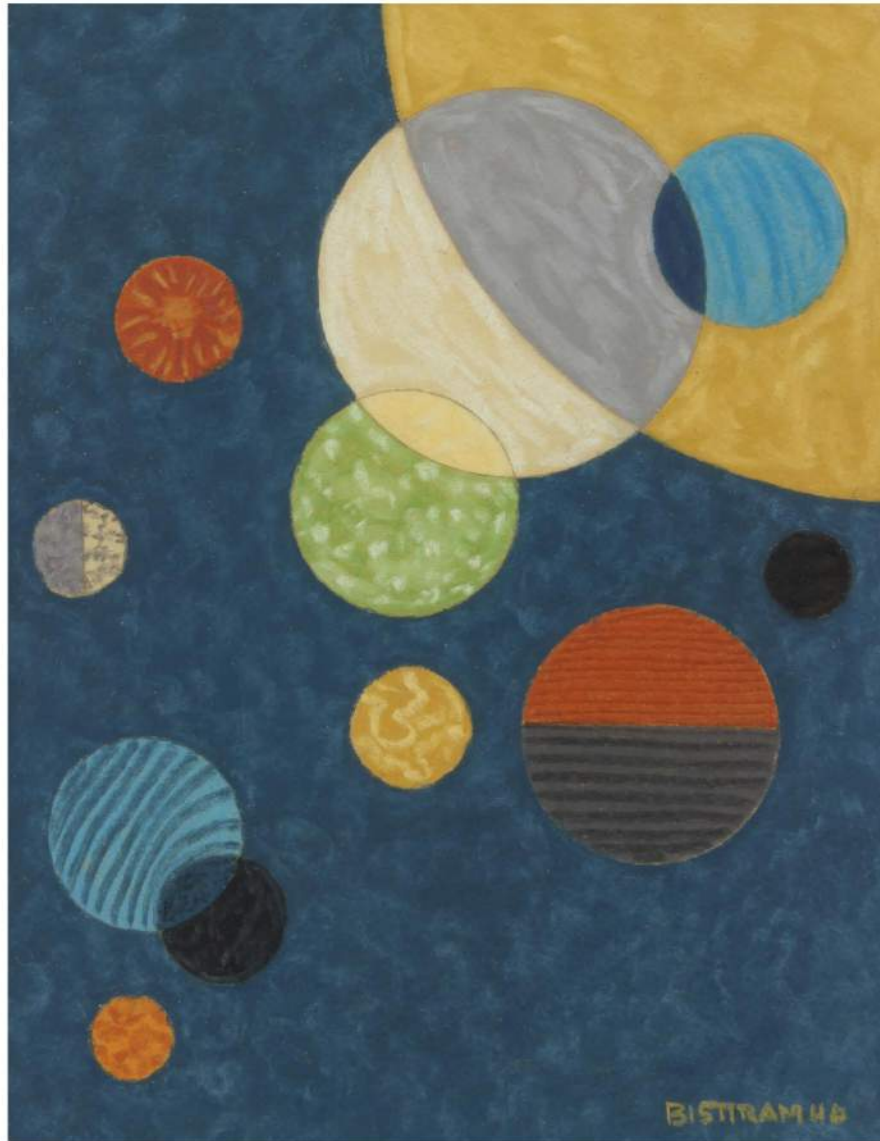
229 East Marcy Street, Santa Fe, NM 87501

This is a short catalog of
works that arrived late for our 2015
Emil Bisttram Day Exhibition.
-Enjoy



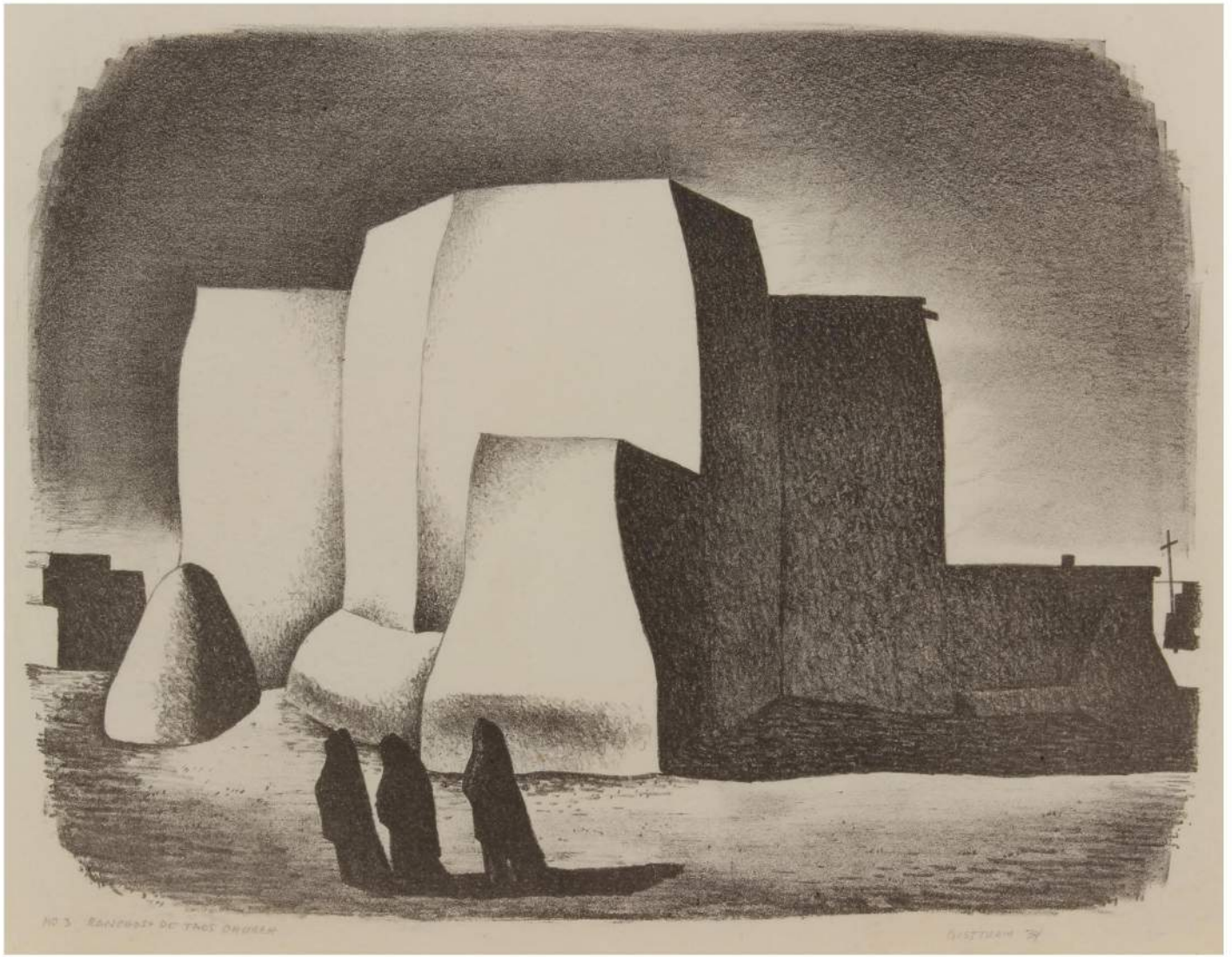
Untitled Sail Boats. Watercolor on paper, 21" x 15". Signed: lower right





Untitled Encaustic, 1940. Encaustic on paper. 8 ¾" x 6 ¾" . Signed & dated: lower right



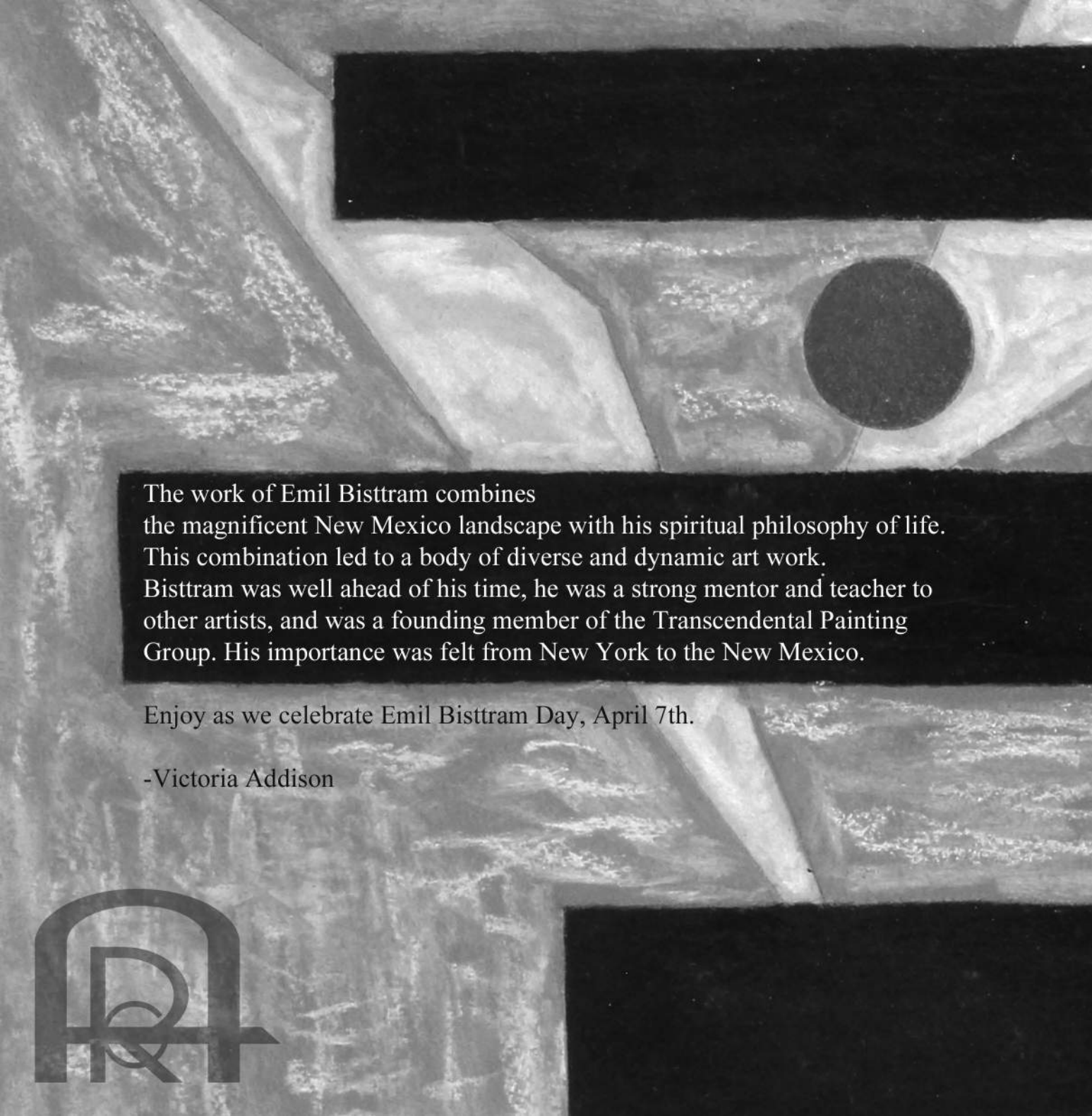


Ranchos de Taos Church, 1934. 12" x 15 ½". Lithograph on Paper. Signed and dated: lower right





My First Watercolor, 1910. Watercolor on paper. 5 $\frac{3}{4}$ " x 3 $\frac{3}{4}$ ". Signed and dated: verso



The work of Emil Bisttram combines the magnificent New Mexico landscape with his spiritual philosophy of life. This combination led to a body of diverse and dynamic art work. Bisttram was well ahead of his time, he was a strong mentor and teacher to other artists, and was a founding member of the Transcendental Painting Group. His importance was felt from New York to the New Mexico.

Enjoy as we celebrate Emil Bisttram Day, April 7th.

-Victoria Addison

