

John Haley Daeburg



~~Ernest Ellis~~

DATUS BISTRAM

LOCKWOOD

of Lichte

VICTOR HIGGINS

NAUMER

~~1928~~ 1928

Calcagno

Raymond Johnson

19 (C) 22

May Cialini

VAN Soelen

Jos. Stella

MARGUERITE ZORACH

WINOLD REIS

Addison Rowe Gallery

Addison Rowe Gallery

229 East Marcy Street, Santa Fe, NM 87501

The Addison Rowe Gallery is committed to promoting the finest examples of American Modernism. Located in Santa Fe, New Mexico our focus is specifically 20th Century Southwest Modernism. This includes but is not limited to: the Taos Founders, Los Cinco Pintores, The Transcendental Painting Group, and the Taos Moderns.

These groups represent the diverse artistic culture of New Mexico and reflect the wide variety of art that the local landscape inspires. Southwest Modernism is not limited to landscapes, Indian portraits, and pueblo scenes. A range of abstract art was created in the Southwest throughout the 20th century that rivals that of New York or San Francisco.

This catalog is a selection of Southwest Modernism that inspires us most.

-Enjoy



Emil Bistram. *Ranchos de Taos Church*, 1970. Oil on canvas, 27 x 36.5 inches.
Signed and dated: lower right



Emil Bisttram
Untitled Adobes, 1939
Encaustic on paper
28 x 22 inches.
Signed: lower right

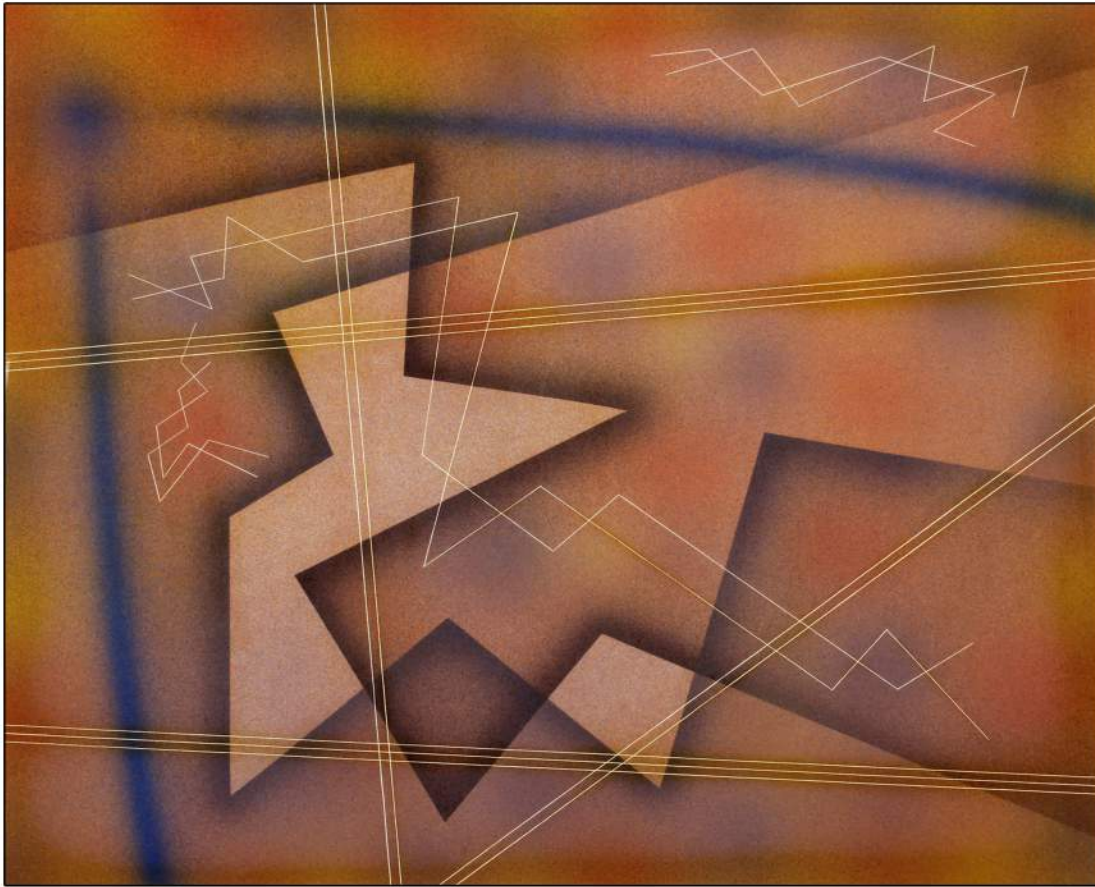


Raymond Jonson
C-Print, 1965
Lithograph on paper
20 x 26 inches, Edition No. 9/15
Title, date, & ed. no: lower right
Signed: lower left

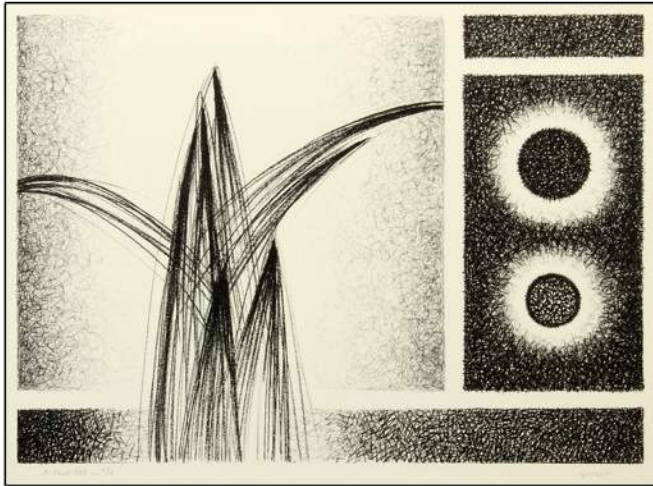
Raymond Jonson
Tempera No. 14, 1955
Tempera on paper
11.25 x 14.25 inches
Signed, Titled, & dated: verso



Emil Bistram
Transcendental Abstraction, 1937
28 x 22 inches
Encaustic on paper
Signed: lower right



Raymond Jonson. *Watercolor No. 1*, 1947. Watercolor on paper, 18 x 21 inches.
Signed, titled, & dated: verso



Raymond Jonson
A-Print, 1965
Lithograph on paper
12.5 x 17.5 inches, Edition No. 2/15
Title, date, & ed. no: lower right
Signed: lower left



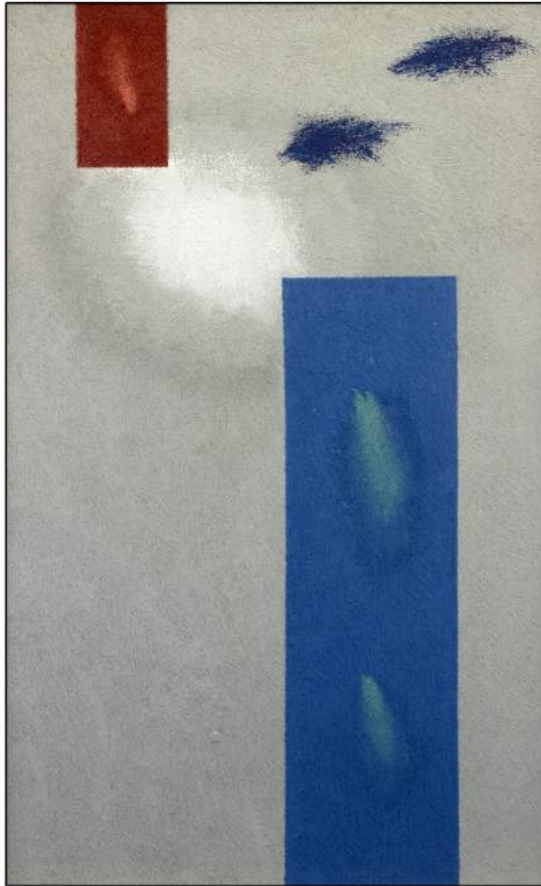
Raymond Jonson
B-Print, 1965
Lithograph on paper
12.5 x 17.5 inches, Edition No. 3/15
Title, date, & ed. no: lower right
Signed: lower left



7 Emil Bistram. *Germination*, 1959. Oil on board, 40 x 27 inches. Signed and dated: lower right



Ward Lockwood. *Figure in Costume*. Acrylic on canvas, 48 x 35.75 inches. Signed: lower left



Raymond Jonson. *Oil No. 6*, 1953. Oil on canvas, 26 x 16 inches. Signed, titled, & dated: verso



Lawrence Calcagno. *Untitled*, 1949. Oil on canvas, 44 x 20 inches. signed and dated: lower right



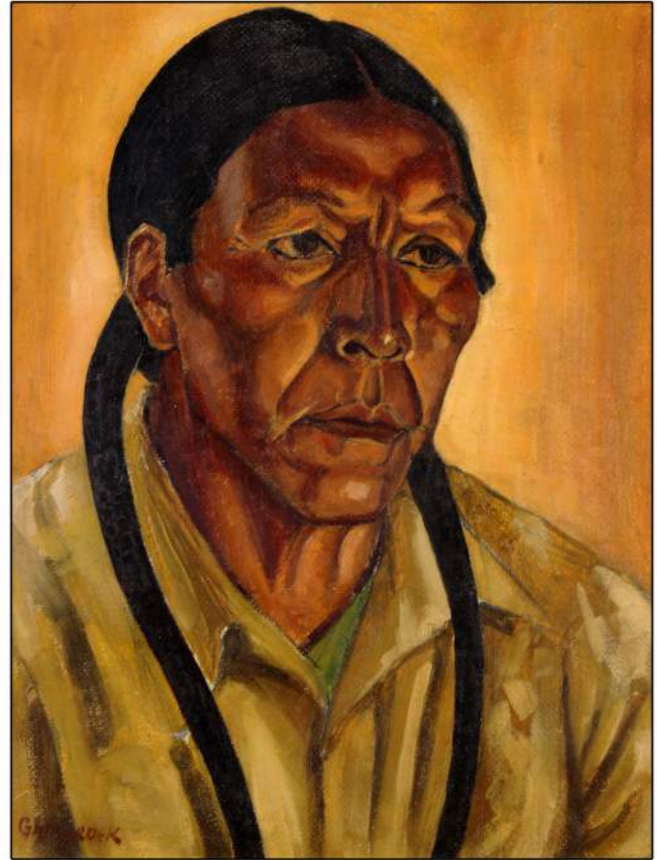
Raymond Jonson. *Arroyo No. 4*, 1922. Oil on board, 18 x 24 inches.
Signed and dated: lower right



Victor Higgins. *New Mexico Landscape*. Watercolor on paper, 11 x 16 inches. Signed: lower left



Winold Reiss. *Cacti*. Watercolor on paper,
13 x 9.5 inches. Signed: lower right



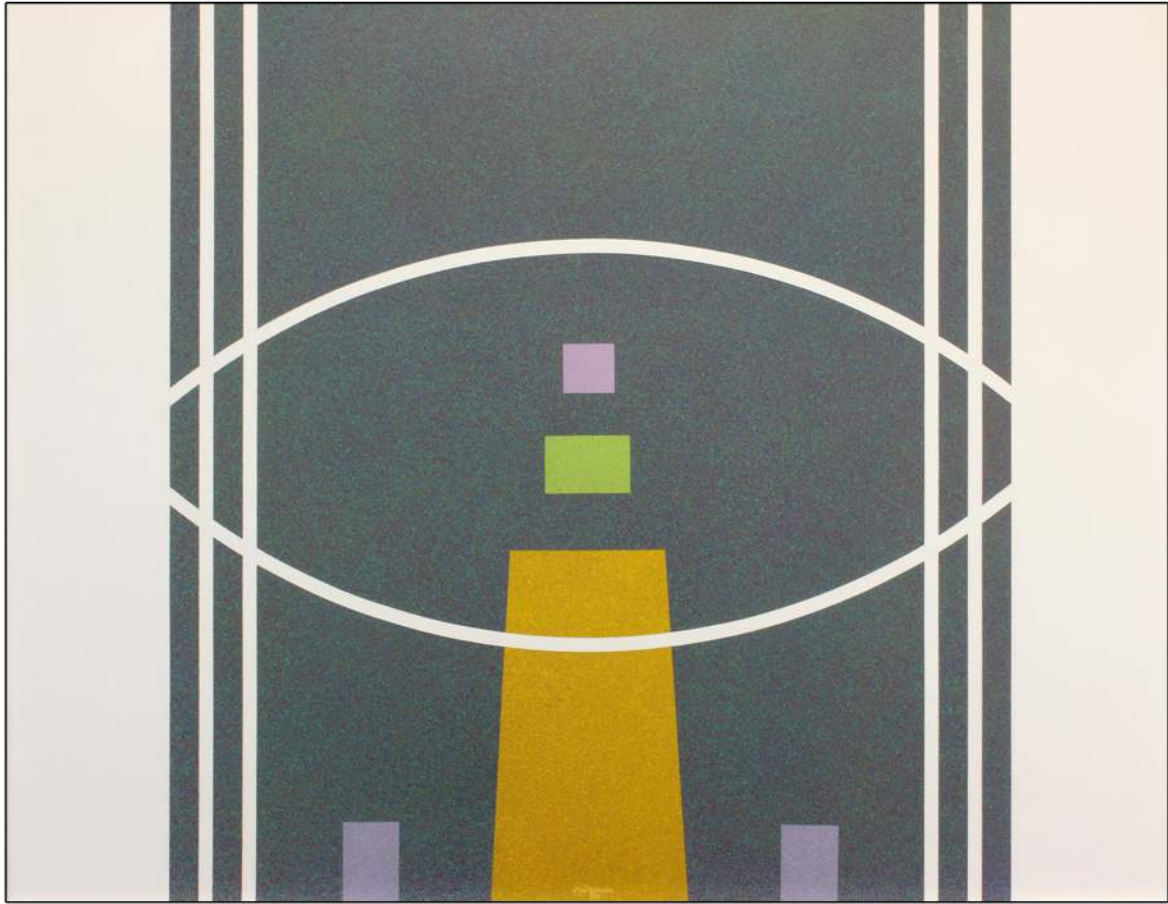
Robert Gribbroek, *Taos Indian Portrait*. Oil on board,
15.5 x 12 inches. Signed: lower left



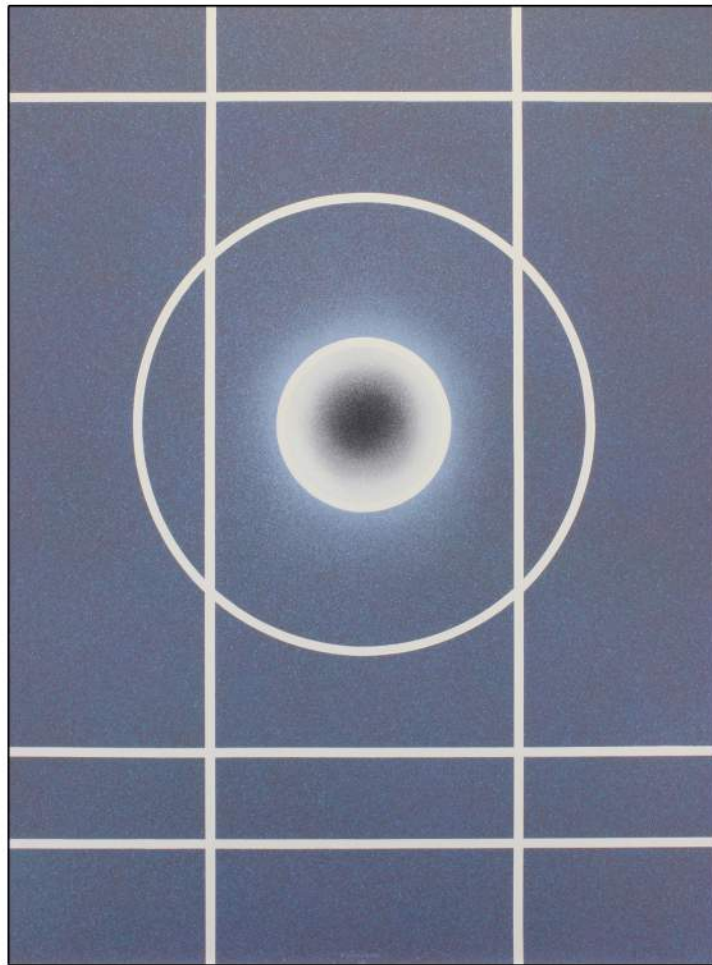
Emil Bisttram. *Red Rain*, ca. 1930. Oil on board, 24 x 30 inches. Signed: lower right



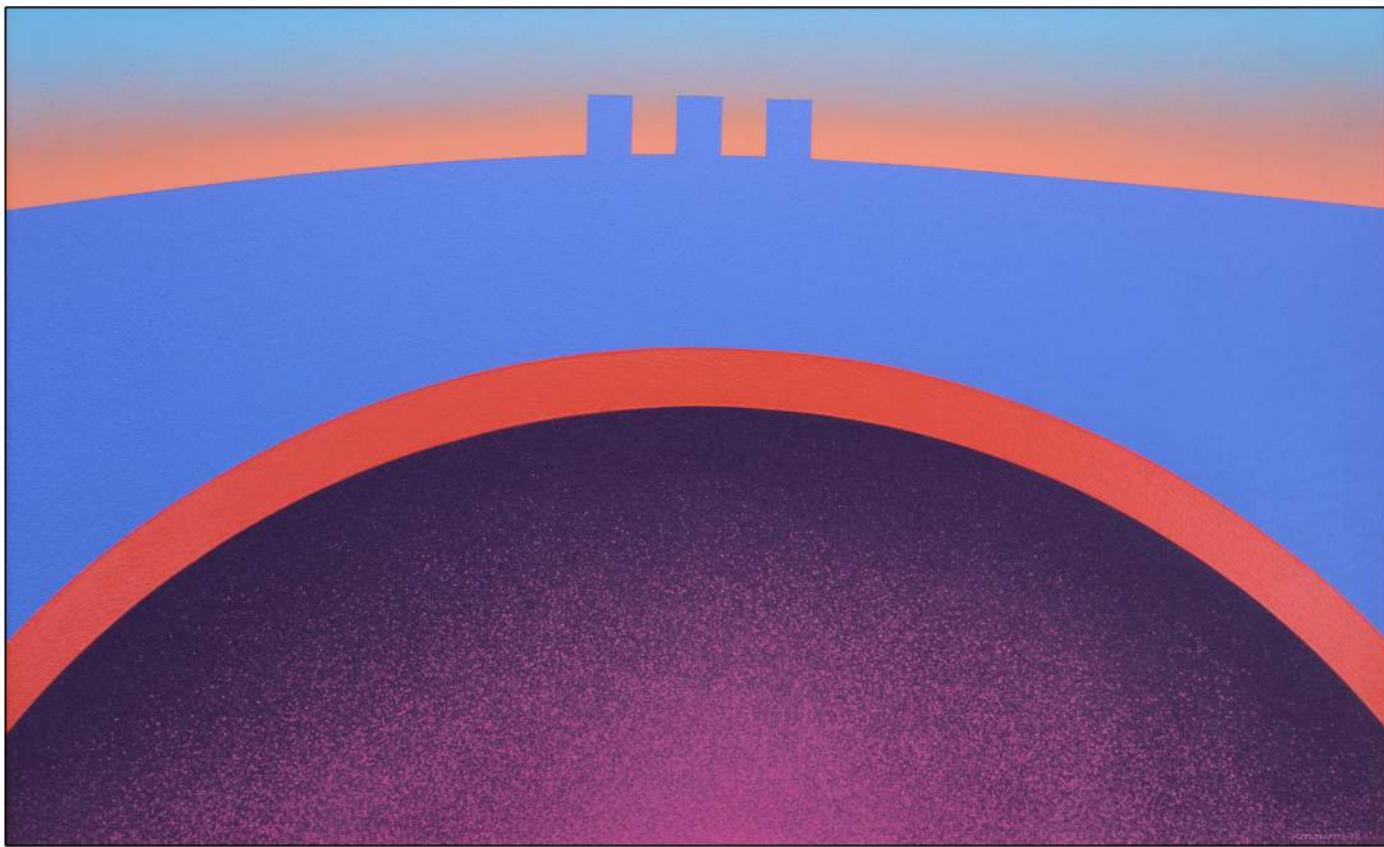
Raymond Jonson. *Polymer No. 13*, 1961. Acrylic on canvas, 36 x 45 inches.
Title, date, & artist's information: verso



Raymond Jonson. *Polymer No. 3*, 1970. Acrylic on canvas, 33 x 42 inches.
Signed, titled, & dated: verso; signed: bottom center



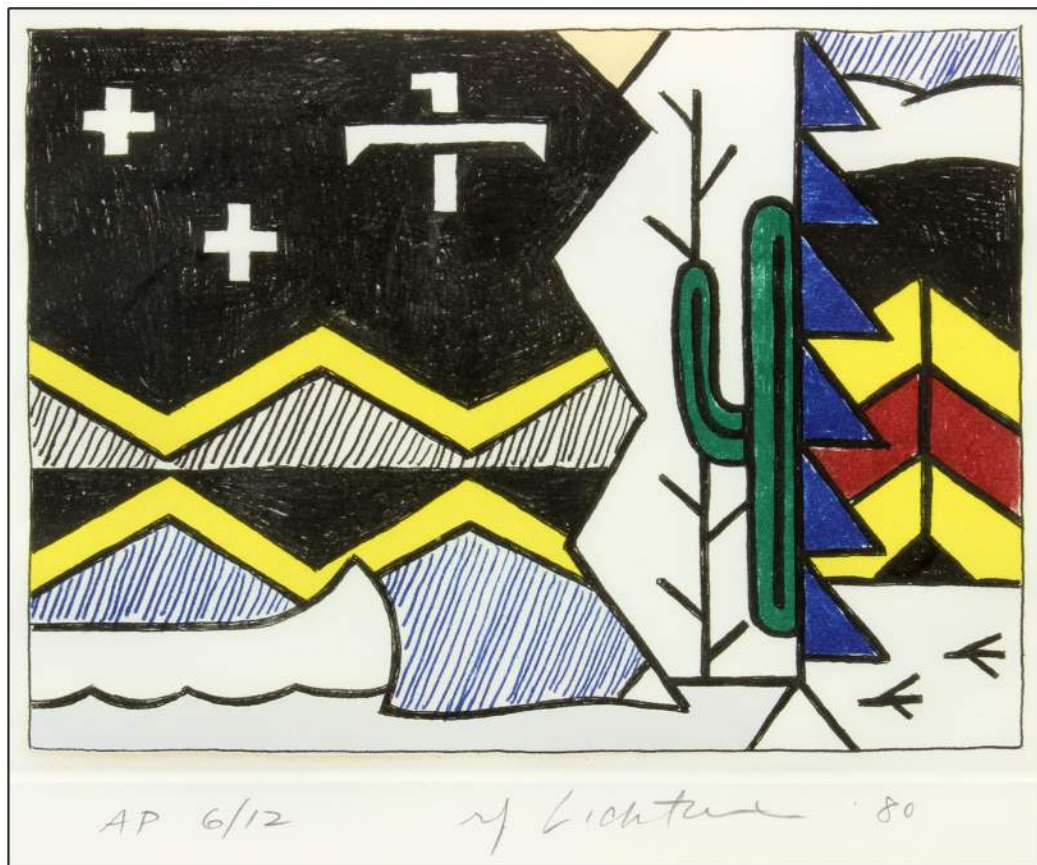
Raymond Jonson
Polymer No. 27, 1968
Oil on masonite
17.75 x 24 inches
Signed: bottom center
Signed, titled, & dated: verso



Raymond Jonson. *Polymer No. 9*, 1978. Acrylic on masonite, 30 x 40 inches.
Signed, titled, & dated: verso



Roy Lichtenstein
Dancing Figures, 1980
Hand-colored etching
11 x 10.5 inches
Artist's Proof 6/12
Signed, numbered,
and dated in pencil



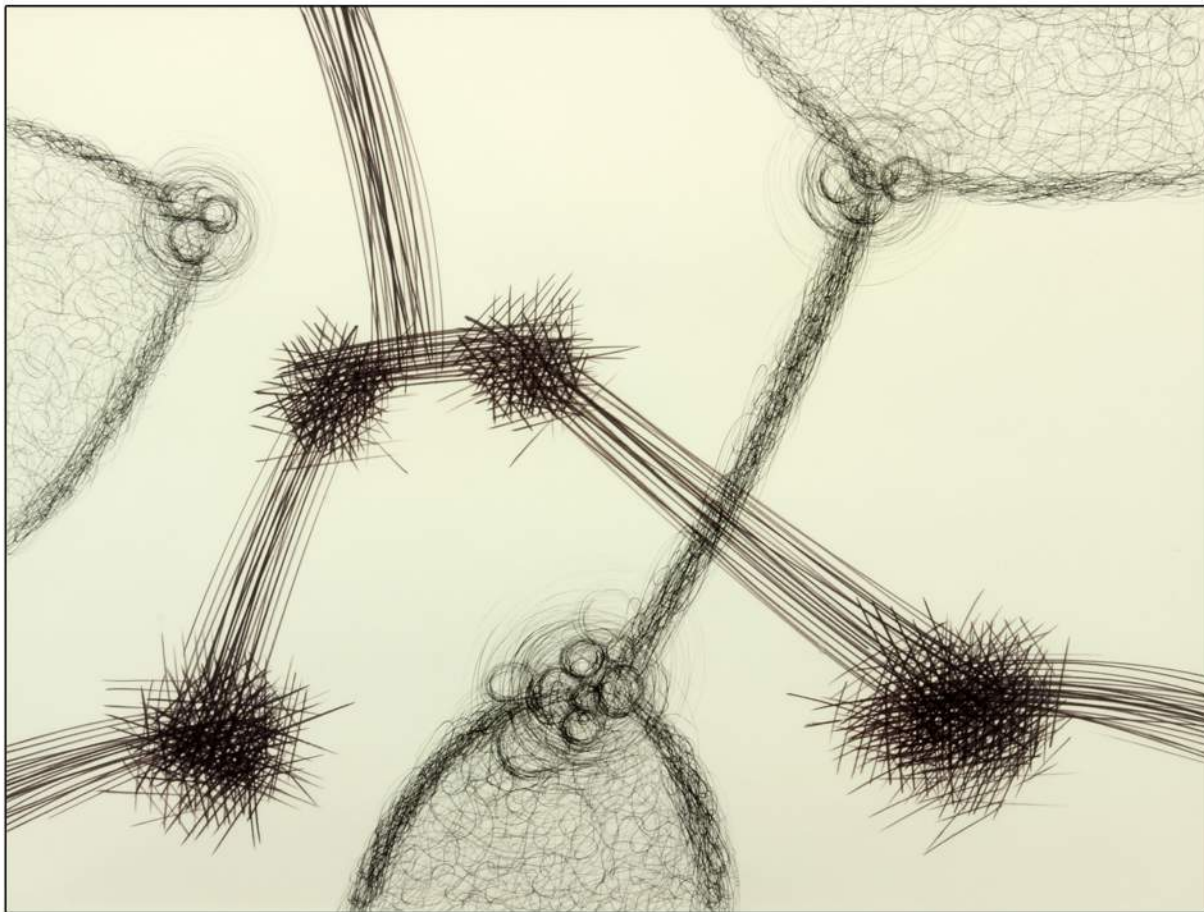
Roy Lichtenstein. *Nightscene*, 1980. Hand-colored etching, 7 x 9.5 inches.
Artist's Proof 6/12. Signed, numbered, and dated in pencil



Raymond Jonson. *Polymer No. 3*, 1962. Acrylic on masonite, 12 x 15 inches
Signed, titled, and dated: verso

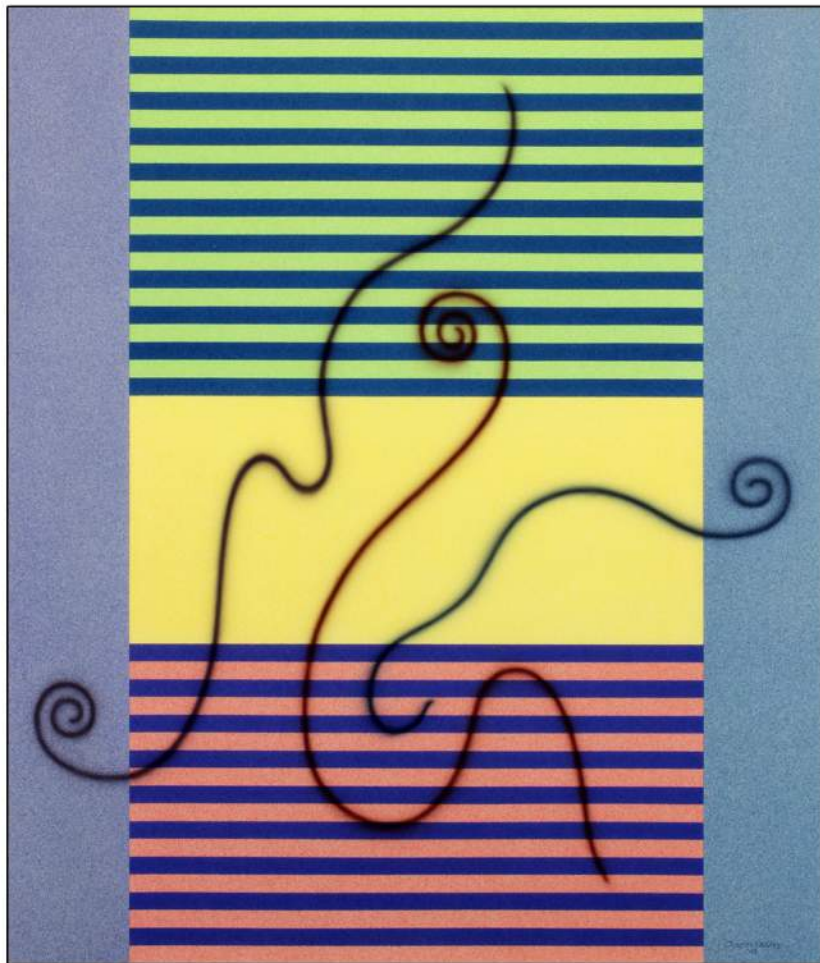


Joseph Stella. *Flowers*. Oil on canvas. 10.5 x 13 inches. Signed: lower left



Raymond Jonson. *Drawing No. 5*, 1957. Ink and Flowmaster on paper, 19 x 25 inches.
Signed, titled, & dated: verso

Raymond Jonson
Chromatic Contrasts
No. 9, 1943
Watercolor on paper
27 x 23 inches
Signed, titled,
& dated: verso





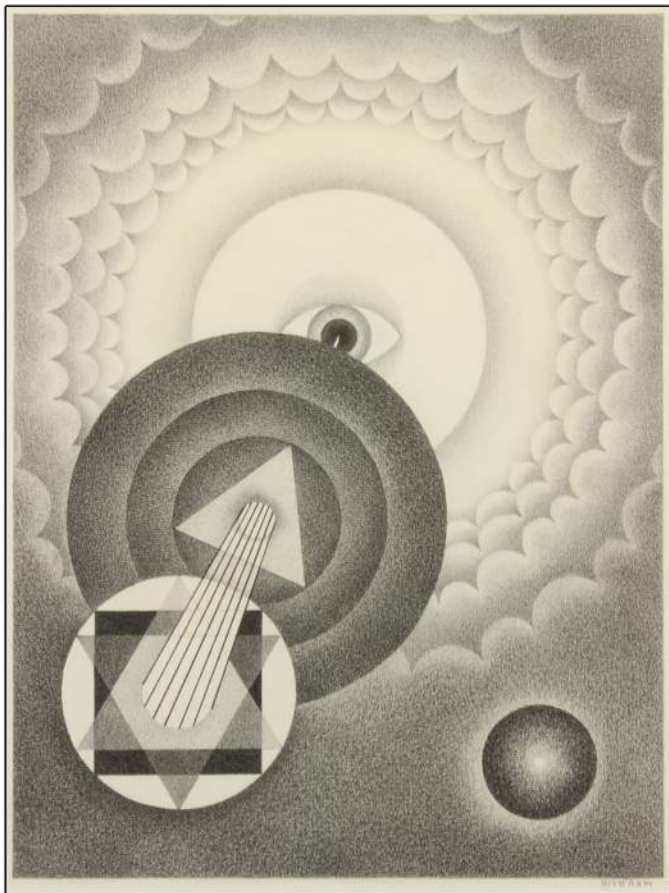
Ward Lockwood
Fiesta Figures, ca. 1950s
Acrylic on canvas
18 x 24 inches
Signed: lower right



Beatrice Mandelman
Red Feathers, 1958
Collage on canvas
12 x 16 inches
Signed: lower right and verso



Ward Lockwood. *Unfurled*, 1959. Polymer on canvas. 36 x 50 inches. Signed and dated: lower right



25

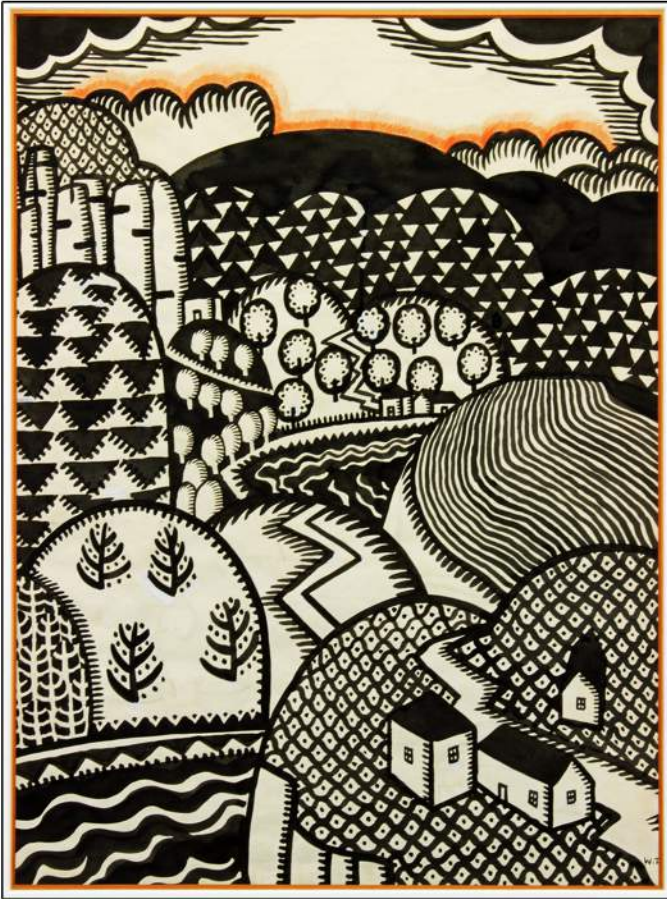
Emil Bisttram. *Untitled Abstraction*, ca. 1940.
Graphite on paper, 18 x 13.5 inches. Signed: lower right



Ed Garman. *No. 243*, 1946. Gouache and watercolor
on paper, 14.5 x 18 inches. Signed, dated,
& numbered: verso

Louis Ribak
Blue Sky, ca 1960s
Oil on canvas
56 x 40 inches
Signed: upper right





Winold Reiss. *Rio Grande*. Brush and ink on paper, 22 1/8 x 16 3/8 inches. Signed: lower right



Raymond Jonson. *Tempera No.22*, 1956. Tempera on board, 19 x 22 inches. Signed, titled, & dated: verso



Raymond Jonson. *Watercolor No. 17*, 1950. Watercolor on board, 21 x 27.25 inches.
Signed, titled, and dated: verso





Raymond Jonson
Oil No. 11, 1941
Oil on canvas
45 x 35 inches
Signed & dated:
lower right
Signed, titled,
& dated: verso

Addison Rowe Gallery, LLC

Addison
Rowe
Gallery
229 East Marcy St.
Santa Fe
New Mexico
87501